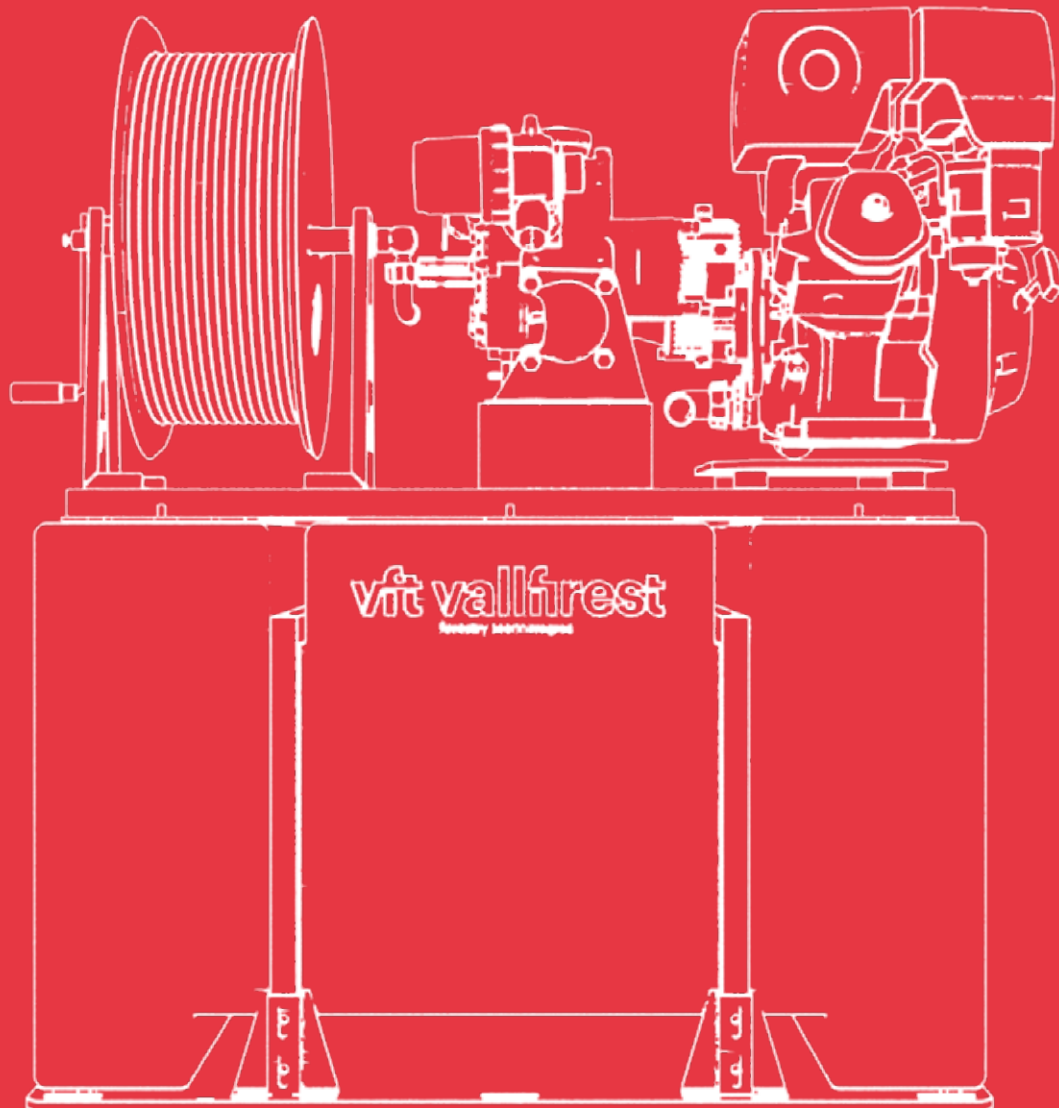


Skid unit with a membrane pump

Horizontal polyethylene tank
Medium pressure



Polyethylene skid unit with a membrane pump

Medium pressure | Up to 40 bar

Rapid intervention skid units designed for pickup vehicles and trailers, equipped with membrane pumps up to 40 bar with a maximum flow of up to 36 L/min.

- High-quality components and great replacement part availability
- Resistant tanks made of polyethylene
- The best quality/price ratio
- 2 year warranty



What is included?

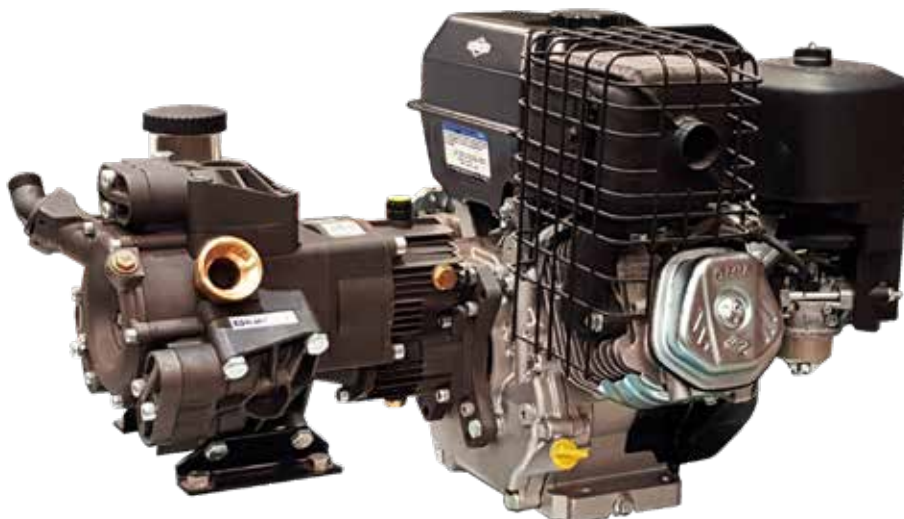
Motor	Gasoline (6.5 HP)
Membrane pump	36 l/min 40 bar
Quick attack winder	Equipped with a high-pressure hose
Water tank	400 L
Attack nozzle	Water
Suction oversleeve	5 m long

Uses

Wildland fires	Recommended use
Container and vehicle fires	Recommended use
Cleaning and unclogging	Less recommended

1 Motor pump unit

Available options. 4-stroke gasoline or diesel combustion motors and membrane pumps.



Motors	Power*	Pump	Max. pressure**	Max. flow**
B&S XR950	6.5 HP	AR30	40 bar	36 l/min
Honda GX160	4.8 HP	AR30	40 bar	36 l/min

Gasoline motor.

* The nominal engine power indicated in this document is the net power tested on a production engine for the engine model pursuant to SAE J1349 (HONDA) / SAE J1940 (Briggs& Stratton) at a specific speed. This value may vary in mass produced motors. The actual output power of the engine installed on the end machine will vary depending on a number of factors such as the applicable engine operating speed, the environmental conditions, maintenance and other variables.

** These values are at direct pump outlet.

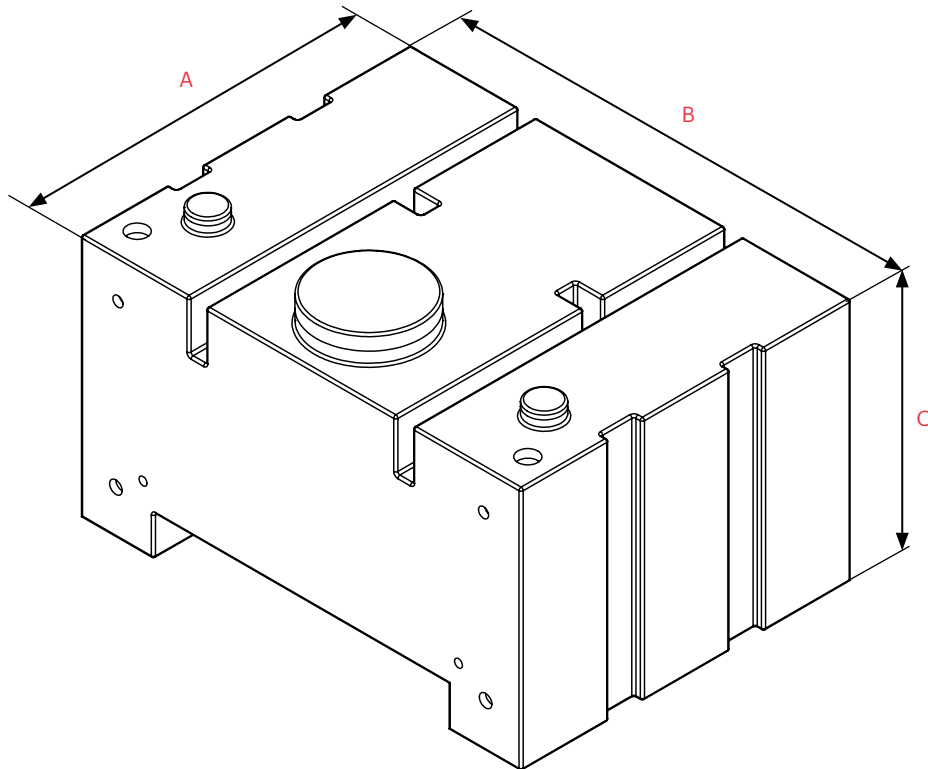
*** The power, pressure and flow values are valid in working conditions: temperature 25°C at sea level. **IMPORTANT:** Engine power will decrease 3.5% for every 300 meters above sea level and 1% for each 5.6°C above 25°C.



2 Water tank

Polyethylene tanks make the entire skid unit lighter. Vallfirest skid units with a polyethylene tank are designed to concentrate the skid unit load in the area closest to the vehicle cabin, avoiding wheel arches on pickup vehicles and optimizing the available space.

- Made of seamless polyethylene via rotational molding.
- 1-1/2" filling spout on the top with couplings (Barcelona, Storz, DSP or others) to fill the tank from a hydrant or exterior pressurized water source.
- 1 configurable 1-1/2" high vent on the top.
- 1 threaded inspection cover with a useful diameter of 200 mm to inspect the tank.
- A water level indicator over connecting ducts.
- A 1" drain to empty the tank.
- Pump return connection to fill the tank by suctioning water from a non-pressurized external water source.



A: Depth
 B: Width
 C: Height

Standard colors	Tank dimensions			
White Red				
	Tank	A [mm]	B [mm]	C [mm]
	400 RH	790	1050	585

3 Components included

3.1 Winder

Made of anti-corrosive material with a manual starting crank and lock system.

TECHNICAL DATA

- Capacity for 50 m long DN12 hose*



3.2 Suction oversleeve

Clear flexible PVC spiral absorption oversleeve with rigid PVC spiral and smooth inner surface. Includes non-return foot valve and filter. Includes a Storz connector for connection to the Vallfirest skid unit.

TECHNICAL DATA

- Length: 5 m
- Oversleeve diameter: DN25 (1")
- Weight: 2.2 kg (DN25)



3.3 Hose

DN12 (1/2") 50 meter semi-rigid hose. Comprised of an inner layer of synthetic rubber reinforced with a metal mesh and coated in abrasion-resistant synthetic rubber. Features a quick water and foam nozzle connection system.

TECHNICAL DATA

- SAE 100 R1AT DN12 (1/2"): 160 bar operating pressure, 0.45 kg/m weight



3.4 Water nozzle

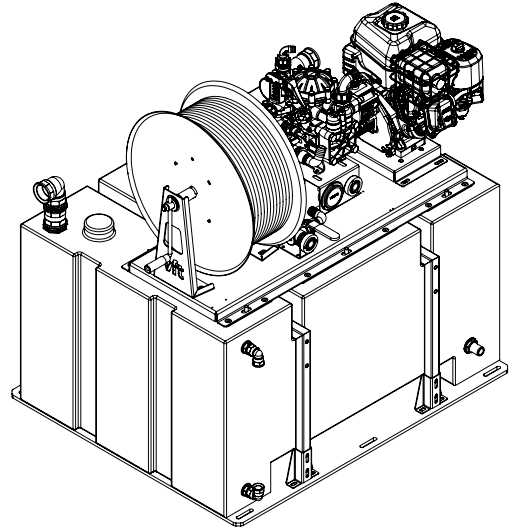
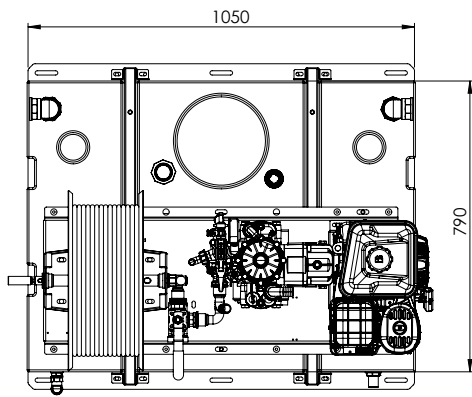
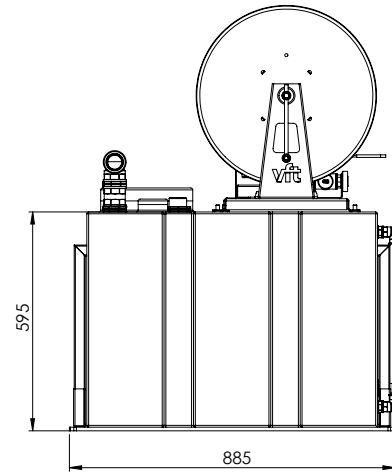
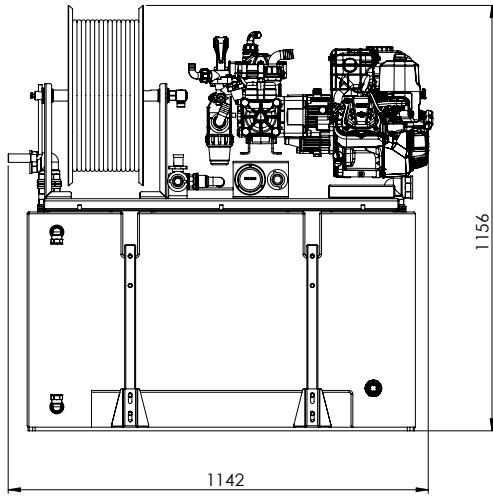
High-pressure and high-range nozzle. Adjustable angle. Interchangeable ceramic nozzle tip and quick connection system.

TECHNICAL DATA

- Maximum pressure: 60 bar
- Maximum flow: 110 L/min.
- Concentrated stream > —
- Hollow cone/fog stream > ◀



4 General dimensions



5 Configurations available

Ref. VFT	Tank	Motor	Battery and electric start	Power *	Pump	Max. Pressure**	Max. Flow **	Approx dry Weight
DVD134H-G30A0	400 RH	B&S XR950	NO	6.5 HP	AR30	40 bar	36 l/min	
DVD134H-G31A0	400 RH	Honda GX160	NO	4.8 HP	AR30	40 bar	36 l/min	

RH: horizontal polyethylene tank.

Gasoline motor.

* The nominal engine power indicated in this document is the net power tested on a production engine for the engine model pursuant to SAE J1349 (HONDA) / SAE J1940 (Briggs & Stratton) at a specific speed. This value may vary in mass produced motors. The actual output power of the engine installed on the end machine will vary depending on a number of factors such as the applicable engine operating speed, the environmental conditions, maintenance and other variables.

** These values are at direct pump outlet.

*** The power, pressure and flow values are valid in working conditions: temperature 25°C at sea level. **IMPORTANT:** Engine power will decrease 3.5% for every 300 meters above sea level and 1% for each 5.6°C above 25°C.

Any questions? Contact us: clientes@vallfirest.com | T. +34 938 678 779